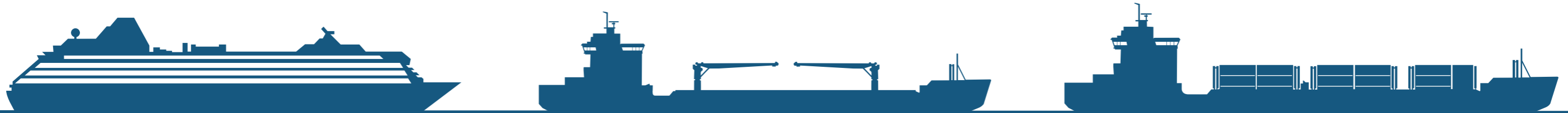




SPECIAL TRAINING REQUIREMENTS FOR PERSONNEL ON SHIPS OPERATING IN POLAR WATERS



The purpose of this information is to assist shipowners and operators with preparations for compliance with the special training requirements for personnel on ships operating in polar waters. It covers:

- Applicability of the requirements for the training and certification of personnel on ships operating in polar waters under Chapter 12 of the Polar Code and Regulation V/4 of the STCW Convention, 1978, as amended;
- Training and certification of personnel in accordance with Regulation V/4 of the STCW Convention, 1978, as amended; and
- Transitional provisions for the training and certification of personnel under Regulation V/4 of the STCW Convention, 1978, as amended.

NOTE

Graphics are best viewed electronically to enable use of zoom functionality of the software or device, or printed in colour on size A3 paper (420 x 297 mm / 16.54" x 11.69").

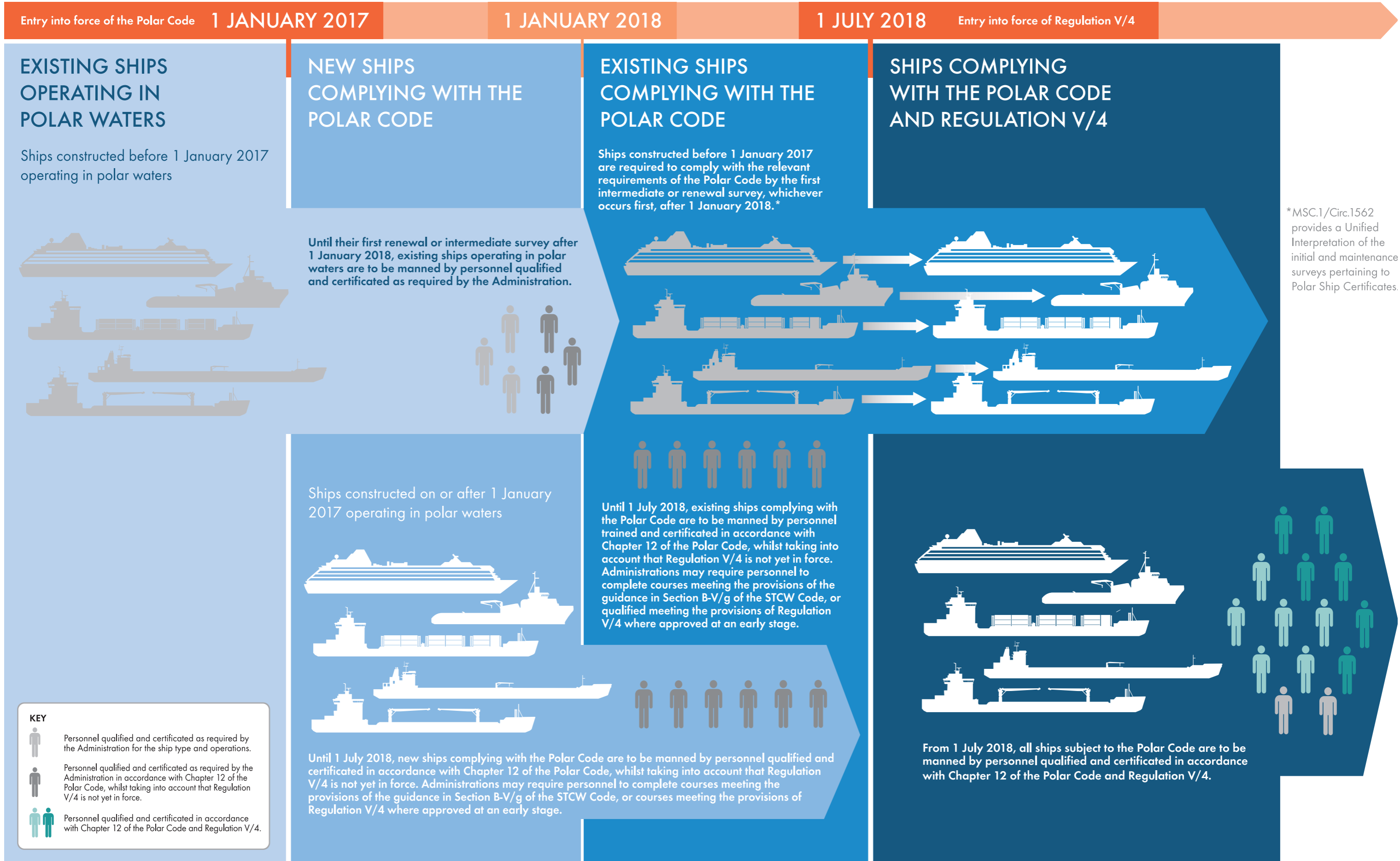
Graphics should be read from left to right, observing and recognizing that headings, keys, colours and symbols are used to illustrate concepts and relationships.



SPECIAL TRAINING REQUIREMENTS FOR PERSONNEL ON SHIPS OPERATING IN POLAR WATERS



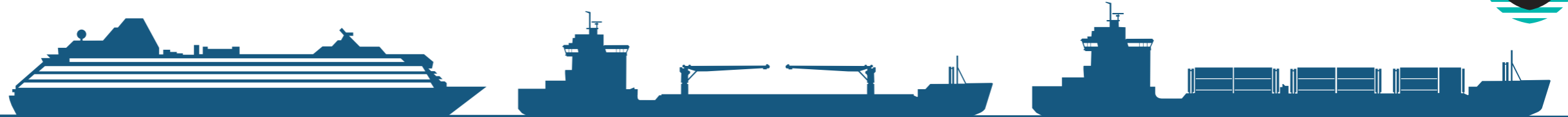
Applicability of the requirements for the training and certification of personnel on ships operating in polar waters under Chapter 12 of the Polar Code and Regulation V/4 of the STCW Convention, 1978, as amended



SPECIAL TRAINING REQUIREMENTS FOR PERSONNEL ON SHIPS OPERATING IN POLAR WATERS



Training and certification of personnel in accordance with Regulation V/4 of the STCW Convention, 1978, as amended



IDENTIFICATION

- Identification of Masters, chief mates and officers in charge of a navigational watch who will serve on ships operating in polar waters.
- Identification of the type of polar waters where the ship will be operating (i.e. ice free, open or other waters).*
- Identification of the type of ship that will be operated (i.e. tanker, passenger ship or other type of ship).

Type of polar waters

Ice free waters*

Type of ship

Any type of ship

Training requirement

No requirement for personnel to receive special training under the Polar Code

Type of polar waters

Open waters*

Type of ship

Ships other than tankers and passenger ships

Training requirement

No requirement for personnel to receive special training under the Polar Code

Type of polar waters

Open waters*

Type of ship

Tankers and passenger ships

Training requirement

Masters, chief mates and officers in charge of a navigational watch to complete approved Basic Training for ships operating in polar waters

Type of polar waters

Other waters*

Type of ship

Any type of ship

Training requirement

Officers in charge of a navigational watch to complete Basic Training for ships operating in polar waters

Masters and chief mates to complete Advanced Training for ships operating in polar waters



TRAINING

Certificate of Proficiency (CoP) in Basic Training for ships operating in polar waters



Completion of approved Basic Training for ships operating in polar waters.

IDENTIFICATION

Identification of Masters and chief mates operating ships in **other waters**.*

TRAINING

Completion of approved Advanced Training for ships operating in polar waters.

Certificate of Proficiency (CoP) in Advanced Training for ships operating in polar waters



SERVICE




Completion of at least 2 months of approved seagoing service in the deck department within polar waters or other equivalent approved seagoing service.

*Ice free waters means no ice is present.

Open waters means a large area of freely navigable water in which sea ice is present in concentrations less than 1/10, and no ice of land origin is present.

Other waters means, based on deduction, those with ice concentration of 1/10 or over.

KEY

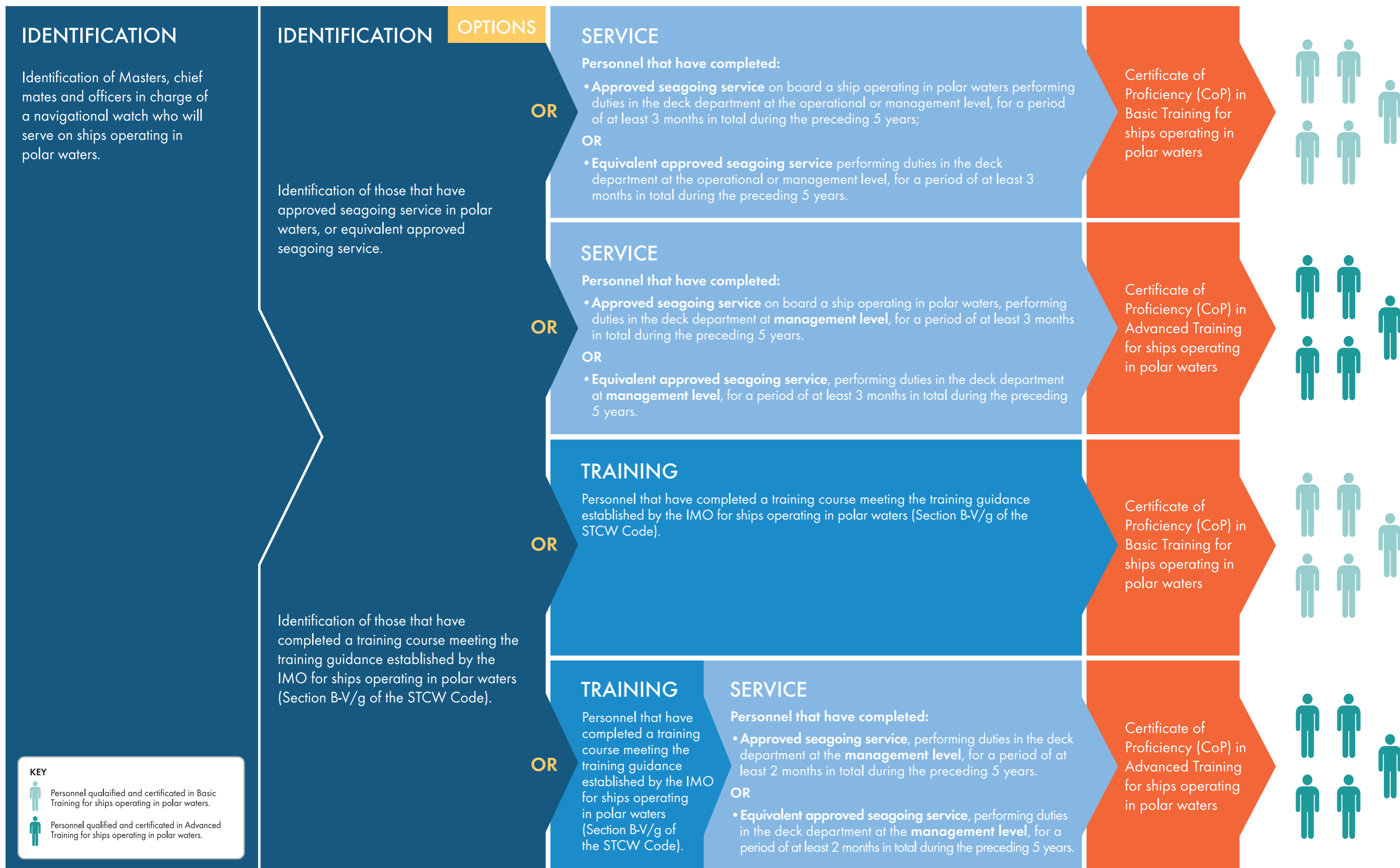
-  Masters, chief mates and officers in charge of a navigational watch who are not required to be qualified and certificated in accordance with Regulation V/4.
-  Personnel qualified and certificated in Basic Training for ships operating in polar waters.
-  Personnel qualified and certificated in Advanced Training for ships operating in polar waters.

SPECIAL TRAINING REQUIREMENTS FOR PERSONNEL ON SHIPS OPERATING IN POLAR WATERS



Transitional provisions for the training and certification of personnel under Regulation V/4 of the STCW Convention, 1978, as amended

Available until 1 July 2020 for seafarers who commenced approved seagoing service in polar waters prior to 1 July 2018



KEY

- Personnel qualified and certificated in Basic Training for ships operating in polar waters.
- Personnel qualified and certificated in Advanced Training for ships operating in polar waters.